

FRIDAY | APRIL 25, 2025

# THE BEACON ACADEMY NEWSLETTER



## LETTER TO THE COMMUNITY

Dear Beacon Academy Community,

The heat is on! And not just in the weather—campus life is abuzz with purpose and intention. We've just wrapped up our BASC Elections. During the Miting de Avance, our candidates shared their inspired plans and intentions for the next school year. It was wonderful to see students stepping up to serve the community—a powerful reminder of how engaged and driven our learners can be when given the space to lead and make a difference.

Meanwhile, our Grade 12 IB students are about to begin their external exams on Monday. We've missed seeing many of them around campus these past few days, but we know they've been hard at work—immersed in revision, attending consultations, and doing everything they can to stay on track. The pressure is certainly rising, but so is their resilience. We are witness to their discipline, courage, and determination to do well and finish strong.

### To our seniors:

We see the effort you've put in, the hours you've invested, and the sacrifices you've made. As you approach your final exams, trust in yourselves. Trust in what you've learned—not just from your textbooks, but from the entire journey that brought you here. Trust in your own capabilities, in how you've grown, and in how much you've already achieved. You are more ready than you think.

### To our BA community:

Let's rally around the 12s. Now more than ever, our seniors need us. Whether it's offering encouragement, sharing a quiet space, or simply checking in—let's show our Grade 12s that they are not alone in this journey. A kind word or a small gesture can go a long way in reminding them that their community is behind them every step of the way.

And as a final thought—whether you're wrapped up in school work, planning next year's student council activities, or completing external exams—remember: this heat isn't here to burn us out. It's here to bring out our best.

Let's continue to support one another, stay cool under pressure, and rise to the challenge—together.

**Ceci Francisco**  
Dean of Faculty  
The Beacon Academy

## WHAT'S IN THIS NEWSLETTER:

**Letter to the Community:**  
**Dean of Faculty**

**Important Dates**

**College Fair**

**Athletics Updates**

**BASC Elections Results**

**BA Open House**

**Kaitlin A. Joins Math  
Delegation**

**Griffin Galleria**

**Kinaiya Food Drive**

**BA Calendar AY 2024-  
2025 & 2025-2026**

## IMPORTANT DATES

Saturday, April 26	Teacher Training for Public Schools
Monday, April 28	Start of IB Diploma Examinations 2025
Wednesday, April 30	College Fair
Thursday, May 1	Labor Day (No Classes)
Monday, May 12	Philippine Elections 2025 (No Classes)
Tuesday, May 13	Moratorium on after-school activities

## YOU'RE INVITED: COLLEGE FAIR

BA parents who wish to attend

Please RSVP by emailing:

[chinny.inumerable@beaconacademy.ph](mailto:chinny.inumerable@beaconacademy.ph)

by 10 am on Tuesday, April 29, 2025.

**Beacon Academy**

# COLLEGE FAIR

Join us **on Wednesday** at The Beacon Academy Gym to meet local and international universities!

Grade 7 - 1:45-2:15 pm  
Grade 8 - 2:15-2:45 pm  
Grade 9 - 1:00-1:30 pm  
Grade 10 - 1:30-2:00 pm  
Grade 11 - 1:00-2:00 pm





**23**

INTERNATIONAL AND LOCAL COLLEGES

MEET UNIVERSITY REPRESENTATIVES FROM

AUSTRALIA  
CANADA  
PHILIPPINES  
SINGAPORE  
UK  
USA

**APRIL 30 WED.**

**1:00 - 2:45 PM**

**BA GYM**

**STUDENTS & PARENTS ARE WELCOME!**



## BA ATHLETICS UPDATES

It's shaping up to be another thrilling weekend for Griffin Athletics as our student-athletes head into the crucial final rounds of their MISAA tournaments!

This coming Saturday, April 26, our Griffin basketball team will battle it out in the MISAA Tournament semi-finals against Chinese International School Manila (CISM), determined to secure a spot in the finals.

Also taking place on Saturday, our girls' volleyball team will compete for the MISAA championship against Domuschola International School. After a strong, focused season, the team is ready to give it their all in this much-anticipated finals match. To cap off the action-packed weekend, our Griffin chess team will compete in Leg 3 of the MISAA Chess Tournament on Sunday, April 27. With previous podium finishes, our chess players are ready to build on their success and continue delivering strong performances.

With championship titles on the line and Griffin spirit running high, let's rally behind our athletes as they close out the season.

Go Griffins!

**GAME  
ANNOUNCEMENTS**

**MISAA  
BASKETBALL SEMIS**  
**APRIL 26, 2025**  
**@ BEACON SCHOOL**  
**3:00 PM BA VS CISM**

**MISAA VOLLEYBALL  
GIRLS FINALS**  
**APRIL 26, 2025**  
**@ CISM**  
**3:30 PM BA VS DIS**

**MISAA CHESS LEG 3**  
**APRIL 27, 2025**  
**@ BEACON SCHOOL**  
**7:00 AM TO 12:00 NN**

**GO GRIFFINS!**

## BASC ELECTIONS RESULTS

Evecom 25-'26



*President*  
**SOFIA PARDO**

*Vice President*  
**SAM GIBERSON**

*Secretary*  
**BIANCA ARRIOLA**

*Treasurer*  
**NINA EVANGELISTA**

*PRO*  
**KENZ HAWAK**

## BEACON ACADEMY HOSTS SUCCESSFUL OPEN HOUSE

On Saturday, April 12, Beacon Academy opened its doors to prospective families during a special Open House event held on campus. From 9:30 to 11:30 AM, guests were warmly welcomed and given the opportunity to explore our vibrant learning environment.

Attendees learned more about the Academy's dynamic International Baccalaureate curriculum for Grades 7 to 12, engaged with faculty, alumni, students, BA parents and experienced a guided tour of our beautiful, green campus. The event provided an excellent glimpse into life at Beacon Academy and the values that guide our educational journey.

We thank all the families who joined us and look forward to welcoming new Griffins in the coming school year!



## BA STUDENT KAITLIN A. JOINS PHILIPPINE MATH DELEGATION

Congratulations to Grade 8 student Kaitlin A., who was selected as one of the awardees in the MTG Young Mathematicians' In-House Intensive Training Program held from April 11 to 14, 2025.

The program brought together 70 top Mathletes from schools across the country to prepare for international competitions.

Kaitlin now joins the Philippine delegation alongside students from Philippine Science High School, Taguig Science High School, and International School Manila.

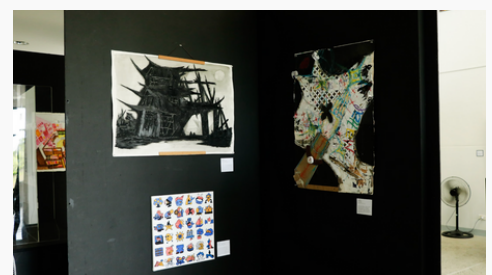
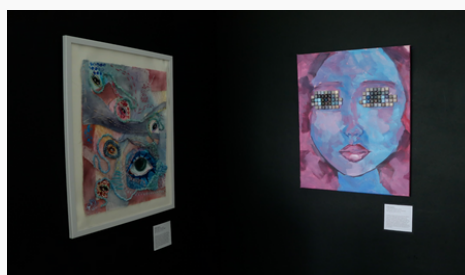
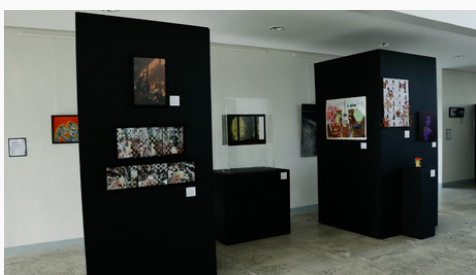
We're proud of you, Kaitlin, and we're cheering you on as you represent both the nation and the Beacon community on the global stage!



## GRIFFIN GALLERIA CELEBRATES CREATIVITY THROUGH VISUAL ARTS

On Tuesday, April 8, the Beacon Academy Visual Arts Gallery came to life with color, expression, and imagination as students from Grades 7 to 12 showcased their work in this year's Griffin Galleria. The exhibition featured a wide range of artistic styles and media, highlighting select pieces from Grades 7–10 alongside the culminating works of our IB Visual Arts Diploma students.

The event not only celebrated the creativity and dedication of our student artists, but also offered families and guests a meaningful glimpse into the depth of thought and emotion behind each piece. Congratulations to our young artists for their outstanding work, and thank you to everyone who came to support and celebrate the arts at Beacon! The exhibit will be up for another few weeks.



## KINAIYA FOOD DRIVE SUPPORTS 240 FAMILIES IN BGY. INCHICAN

On April 5, Saturday, Kinaiya—a student-led organization founded by Beacon Academy students Annika V. and Mafi L.—held a successful food drive at Brgy. Inchican Elementary School. The initiative benefited 240 students and their families from Grades 3 and 4, offering much-needed food support to the local community.

Originally envisioned as a feeding program, the initiative evolved into a food drive to provide more sustainable and flexible assistance. Families received essential grocery items including rice, canned goods, and instant noodles—enabling them to prepare meals that suited their individual needs.

This event was made possible through proceeds from a student-run bake sale and the generosity of sponsors. In addition to distributing food, Kinaiya members—including Grade 11 students Kenzo H., Leah N., Kimi J., Ysabel DG., Marcus C., and Patrick DG.—organized games and activities, creating a joyful and meaningful day for all participants.

Kinaiya continues its mission to empower children by promoting equal access to resources and fostering an environment where all learners can grow and thrive.



## Beacon Academy Communications Protocols AY 2024-2025

Matters relating to....	Department / Email
<b>Students</b> Academic, School Life, Learning Support	Faculty Advisers / Homeroom Teachers
<b>IB Diploma Programme</b> Senior High School (G 11-12)	Iris Morga / DP Coordinator dpcoordinator@beaconacademy.ph
<b>IB Middle Years Programme</b> Junior High School (G 7-10)	Roy Villegas / MYP Coordinator mypcoordinator@beaconacademy.ph
<b>College &amp; Career Counseling</b>	Maricar Pascual / C&C Counselor maricar.pascual@beaconacademy.ph  Chinny Inumerable / C&C Counselor chinny.inumerable@beaconacademy.ph
<b>Mental Health &amp; Well-Being</b>	Din Mendoza / JHS Counselor din.mendoza@beaconacademy.ph  Vian Erasmo / SHS Counselor vian.erasmo@beaconacademy.ph
<b>Curriculum, Exams, &amp; Faculty</b>	Ceci Francisco / Dean of Faculty dof@beaconacademy.ph
<b>Student Conduct, Support, &amp; Activities</b>	Lui Morano / Dean of Students dos@beaconacademy.ph
<b>Health, Safety, &amp; Bus Services</b>	Luvim Encinares / Student Services Asst. studentservices@beaconacademy.ph
<b>School Records</b>	Marnell Lagan / School Registrar registrar@beaconacademy.ph
<b>Finance</b>	Lorna Sabino / Finance Manager finance@beaconacademy.ph
<b>School Leadership &amp; Policy</b> Child Protection Committee Committee on Decorum and Investigation	Mark Escaler / Head of School mark.escaler@beaconacademy.ph  Victor Villanueva / Deputy Head of School victor.villanueva@beaconacademy.ph



## THE BEACON ACADEMY ACADEMIC CALENDAR 2024-2025

Semester 1 JULY 2024							
Week	S	M	T	W	T	F	S
		1	2	3	4	5	6
	7	8	9	10	11	12	13
	14	15	16	17	18	19	20
	21	22	23	24	25	26	27
	28	29	30	31			
Total No. of Days: 0							

AUGUST 2024							
Week	S	M	T	W	T	F	S
					1	2	3
1	4	5	6	7	8	9	10
2	11	12	13	14	15	16	17
3	18	19	20	21	22	23	24
4	25	26	27	28	29	30	31
Total No. of Days: 19							

SEPTEMBER 2024							
Week	S	M	T	W	T	F	S
5	1	2	3	4	5	6	7
6	8	9	10	11	12	13	14
7	15	16	17	18	19	20	21
8	22	23	24	25	26	27	28
9	29	30					
Total No. of days: 21							

OCTOBER 2024							
Week	S	M	T	W	T	F	S
							1
1	6	7	8	9	10	11	12
2	13	14	15	16	17	18	19
3	20	21	22	23	24	25	26
4	27	28	29	30	31		
Total No. of Days: 17							

NOVEMBER 2024							
Week	S	M	T	W	T	F	S
4	3	4	5	6	7	8	9
5	10	11	12	13	14	15	16
6	17	18	19	20	21	22	23
7	24	25	26	27	28	29	30
Total No. of days: 20							

DECEMBER 2024							
Week	S	M	T	W	T	F	S
8	1	2	3	4	5	6	7
9	8	9	10	11	12	13	14
	15	16	17	18	19	20	21
	22	23	24	25	26	27	28
	29	30	31				
Total No. of days: 12							

Semester 2 JANUARY 2025							
Week	S	M	T	W	T	F	S
1	5	6	7	8	9	10	11
2	12	13	14	15	16	17	18
3	19	20	21	22	23	24	25
4	26	27	28	29	30	31	
Total No. of Days: 19							

FEBRUARY 2025							
Week	S	M	T	W	T	F	S
5	2	3	4	5	6	7	8
6	9	10	11	12	13	14	15
7	16	17	18	19	20	21	22
8	23	24	25	26	27	28	
Total No. of days: 18							

MARCH 2025							
Week	S	M	T	W	T	F	S
9	2	3	4	5	6	7	8
10	9	10	11	12	13	14	15
1	16	17	18	19	20	21	22
2	23	24	25	26	27	28	29
3	30	31					
Total No. of days: 18							

APRIL 2025							
Week	S	M	T	W	T	F	S
4	6	7	8	9	10	11	12
5	13	14	15	16	17	18	19
6	20	21	22	23	24	25	26
7	27	28	29	30			
Total No. of days: 17							

MAY 2025							
Week	S	M	T	W	T	F	S
8	4	5	6	7	8	9	10
9	11	12	13	14	15	16	17
10	18	19	20	21	22	23	24
11	25	26	27	28	29	30	31
Total No. of days: 21							

JUNE 2025							
Week	S	M	T	W	T	F	S
12	1	2	3	4	5	6	7
	8	9	10	11	12	13	14
	15	16	17	18	19	20	21
	22	23	24	25	26	27	28
	29	30					
Total No. of days: 5							

### IMPORTANT DATES

Jun 10 - Jul 5

Jul 1

Jul 4

Jul 8 - Aug 1

Aug 2

Aug 2

Aug 5-9

Aug 13-14

Aug TBA

Aug 21

Aug 26

Sep 11

Sep 30 - Oct 4

Oct 7-11

Oct 14

Oct 15

Oct 21- 26

Nov 1

Nov 2

Nov 20

Nov 30

Dec 8

Dec 9 - Dec 13

Dec 18 - Jan 3

Jan 6

Jan 20-25

Jan 29

Jan TBA

Feb 3

Feb 10

Mar 10 - 12

March 13 - 14

March 17

Mar 24 - Apr 4

Mar 31

Apr 7

Apr 9

Apr 16 - 20

Apr 21 - 25

Apr 28 - May 21

May 1

May 12

May 19 - 23

Jun 6

Campus Break

In-Service for All New Faculty

BA Leadership & Management Returns

All Faculty In-Service

Start of Quarter 1

Parent and New Student Orientation

Classes Begin for All Students; Foundation Days

National Career Assessment Examination (NCAE) for Grade 10

National Achievement Test (Grade 11)

Special Non-Working Day: Ninoy Aquino Day

Regular Holiday: National Heroes Day

Early Release: Faculty Professional Development

MYP Exam Week

No Classes: Quarter Recess

No Classes: Faculty Professional Development

Start of Quarter 2

Parent-Teacher Conferences (Online)

Special Non-Working Day: All Saints' Day

Special Non-Working Day: All Souls' Day

Early Release: Faculty Professional Development

No Classes: Bonifacio Day

Special Non-Working Day: Feast of the Immaculate Conception

MYP/DP mid-year exam week

No Classes: Christmas/New Year Break

Start of Quarter 3

Parent-Teacher Conferences (Online)

No Classes: Chinese New Year

National Achievement Test (Grade 12)

No Classes: Binan Day

No Classes: Faculty Professional Development

MYP Exams

Quarter Recess

Start of Quarter 4

Grade 12 Mock Exams

Eid al-Fitr (TBC)

No Classes: Faculty Professional Development

Regular Holiday: Araw ng Kagitingan

No Classes: Easter Break

Grade 12 BA Pathway Exam Week

IB Diploma Examinations 2025

Regular Holiday: Labor Day

Philippine Elections 2025

MYP/DP Year-End Exam Week

Graduation Day; Last Day of School

Number of Class Days in the 1st Quarter:

44

9 weeks

Number of Class Days in the 2nd Quarter:

45

9 weeks

Number of Class Days in the 3rd Quarter:

45

10 weeks

Number of Class Days in the 4th Quarter:

53

12 weeks

Total Number of Class Days:

187

Updated 23 July 2024



## THE BEACON ACADEMY ACADEMIC CALENDAR 2025-2026

### Semester 1

Week	S	M	T	W	T	F	S
			I	2	3	4	5
6	7	8	9	10	11	12	
13	14	15	16	17	18	19	
20	21	22	23	24	25	26	
27	28	29	30	31			

Total No. of Days: 0

### Semester 2

Week	S	M	T	W	T	F	S
						I	2
1	4	5	6	7	8	9	10
2	11	12	13	14	15	16	17
3	18	19	20	21	22	23	24
4	25	26	27	28	29	30	31

Total No. of Days: 19

### IMPORTANT DATES

#### Campus Break

BA Summer Program TBC  
BA Leadership & Management Returns  
BA New Faculty Orientation  
All Faculty In-Service  
Parent and New Student Orientation

#### Start of Quarter I

Foundation Days  
Special Non-Working Day: Ninoy Aquino Day  
Regular Holiday: National Heroes Day  
MYP (Grades 7-10) 1st Quarter Examinations

#### Quarter Recess

Professional Development Day (No Classes)

#### Start of Quarter 2

Parent-Teacher Conferences (In-Person)  
Special Non Working Day: All Saints' Eve  
Special Non-Working Day: All Saints' Day  
Regular Holiday: Bonifacio Day  
Early Release: Faculty Professional Development  
Special Non-Working Day: Feast of the Immaculate Conception  
MYP (Grades 7-10); DP (Grades 11-12) Midyear Examinations

No Classes: Christmas/New Year Break

#### Start of Quarter

Parent-Teacher Conferences (Online)  
Professional Development Day (No Classes) \*\*  
No Classes: Binan Day  
Chinese New Year TBC  
Early Release: Faculty Professional Development \*\*  
Eid al Fitr TBC  
MYP (Grades 7-10) 3rd Quarter Examinations  
Easter Break

#### Start of Quarter 4

Regular Holiday: Araw ng Kagitingan  
Professional Development Day (No Classes) \*\*  
IB Diploma Examinations 2026 TBC  
Regular Holiday: Labor Day  
MYP (Grades 7-10); DP (Grade 11) Year-end Examinations

#### JHS Moving Up Day

Graduation Day; Last Day of School  
Last Day of School

Week	S	M	T	W	T	F	S
						I	2
1	3	4	5	6	7	8	9
2	10	11	12	13	14	15	16
3	17	18	19	20	21	22	23
4	24	25	26	27	28	29	30
	31						

Total No. of Days: 17

Week	S	M	T	W	T	F	S
5	1	2	3	4	5	6	7
6	8	9	10	11	12	13	14
7	15	16	17	18	19	20	21
8	22	23	24	25	26	27	28

Total No. of days: 17

Week	S	M	T	W	T	F	S
5	1	2	3	4	5	6	
6	7	8	9	10	11	12	13
7	14	15	16	17	18	19	20
8	21	22	23	24	25	26	27
9	28	29	30				

Total No. of days: 22

Week	S	M	T	W	T	F	S
9	1	2	3	4	5	6	7
10	8	9	10	11	12	13	14
11	15	16	17	18	19	20	21
12	22	23	24	25	26	27	28
	29	30	31				

Total No. of days: 21

Week	S	M	T	W	T	F	S
10	5	6	7	8	9	10	11
11	12	13	14	15	16	17	18
12	19	20	21	22	23	24	25
13	26	27	28	29	30	31	
	0						

Total No. of Days: 18

Week	S	M	T	W	T	F	S
13							
14	5	6	7	8	9	10	11
15	12	13	14	15	16	17	18
16	19	20	21	22	23	24	25
17	26	27	28	29	30		

Total No. of days: 17

Week	S	M	T	W	T	F	S
14	2	3	4	5	6	7	8
15	9	10	11	12	13	14	15
16	16	17	18	19	20	21	22
17	23	24	25	26	27	28	29
	30						

Total No. of days: 20

Week	S	M	T	W	T	F	S
19	3	4	5	6	7	8	9
20	10	11	12	13	14	15	16
21	17	18	19	20	21	22	23
22	24	25	26	27	28	29	30
	31						

Total No. of days: 20

Week	S	M	T	W	T	F	S
18	1	2	3	4	5	6	
19	7	8	9	10	11	12	13
20	14	15	16	17	18	19	20
	21	22	23	24	25	26	27
	28	29	30	31			

Total No. of days: 11

Week	S	M	T	W	T	F	S
23	1	2	3	4	5	6	
24	7	8	9	10	11	12	13
	14	15	16	17	18	19	20
	21	22	23	24	25	26	27
	28	29	30				

Total No. of days: 9

Number of Class Days in the 1st Quarter: 44  
Number of Class Days in the 2nd Quarter: 44  
Number of Class Days in the 3rd Quarter: 57  
Number of Class Days in the 4th Quarter: 46  
Total Number of Class Days: 191

Updated 9 January 2024